

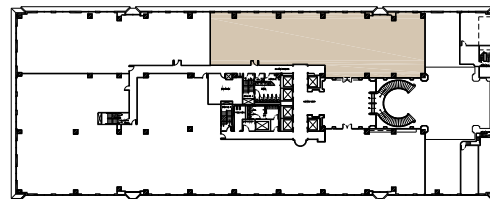
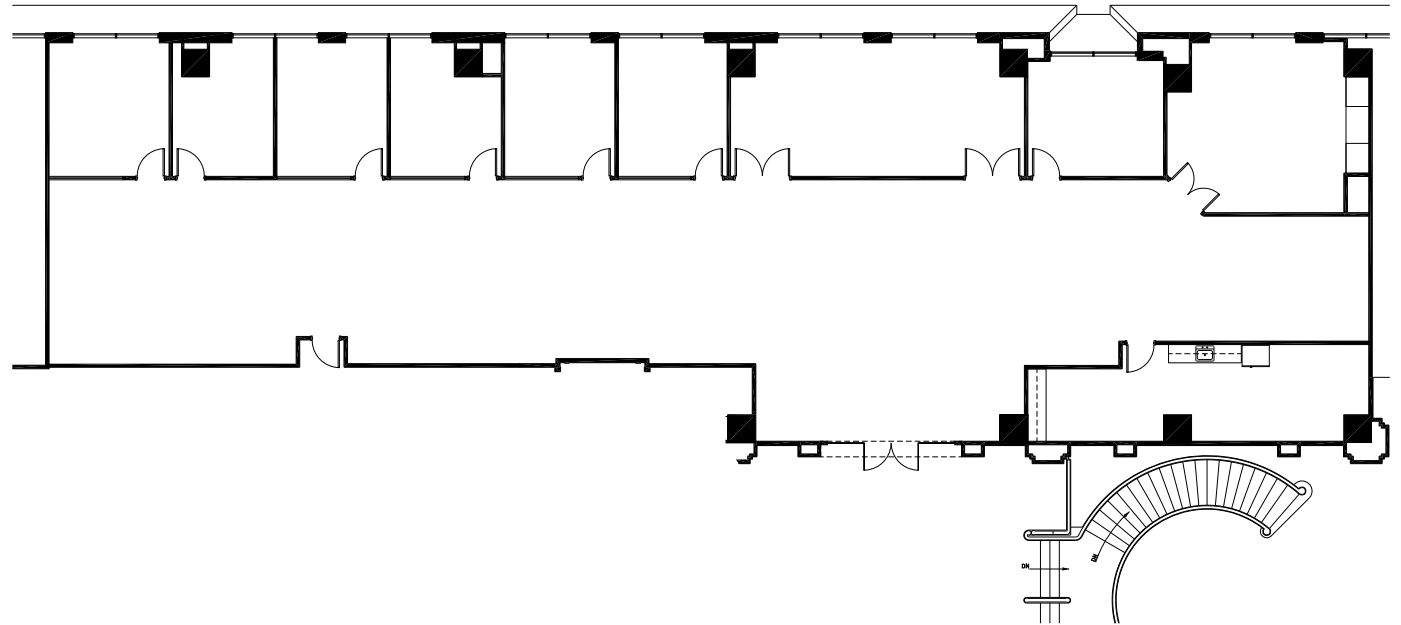
# RESURGENS PLAZA

12<sup>th</sup> FLOOR

STE 1250  
6,800 SF

945 EAST PACES  
FERRY RD.

ATL | GA



## Lincoln

**CUSHMAN &  
WAKEFIELD**

ZACH WOOTEN  
+1 770 299 3072  
zach.wooten@cushwake.com

STEPHEN CLIFTON  
+1 770 299 3039  
stephen.clifton@cushwake.com

PAYTON MAXHEIMER  
+1 404 853 5343  
payton.maxheimer@cushwake.com

©2026 Cushman & Wakefield. All rights reserved. The information contained in this communication is strictly confidential. This information has been obtained from sources believed to be reliable but has not been verified. No warranty or representation, express or implied, is made as to the condition of the property (or properties) referenced herein or as to the accuracy or completeness of the information contained herein, and same is submitted subject to errors, omissions, change of price, rental or other conditions, withdrawal without notice, and to any special listing conditions imposed by the property owner(s). Any projections, opinions or estimates are subject to uncertainty and do not signify current or future property performance. COE-PM-CENTRAL- 04/22/26